

MORRISON OVERVIEW



THE MORRISON HOTEL

is ideally located in central Dublin and enjoys excellent public transport links. The hotel is close to all major routes.

Our state of the art meeting and function rooms can cater for a wide variety of events such as meetings, conferences, trainings, seminars, press and product launches, weddings and private cocktail / drinks receptions.

We offer a wide range of highly versatile meeting and conference spaces that can accommodate meetings from 2 to 240 delegates and receptions for up to 350 guests. Each of our venues offer plenty of natural daylight. Event organisers can enjoy a range of additional complimentary, high quality benefits for their event which include LCD projector and screen, podium with microphone, PA system, flipcharts, note pads and pens, WiFi and mineral water on arrival for example.



Please contact our dedicated Meeting and Events Team on tel: +353 1 887 2458
or email events@morrisonhotel.ie for availability or additional information

The Morrison a DoubleTree by Hilton, Ormond Quay, D1 t: + 353 1 887 2458 e: events@morrisonhotel.ie www.morrisonhotel.ie

[@MORRISONDUBLIN](https://twitter.com/MORRISONDUBLIN)

[f/MORRISONHOTELDUBLIN](https://www.facebook.com/MORRISONHOTELDUBLIN)



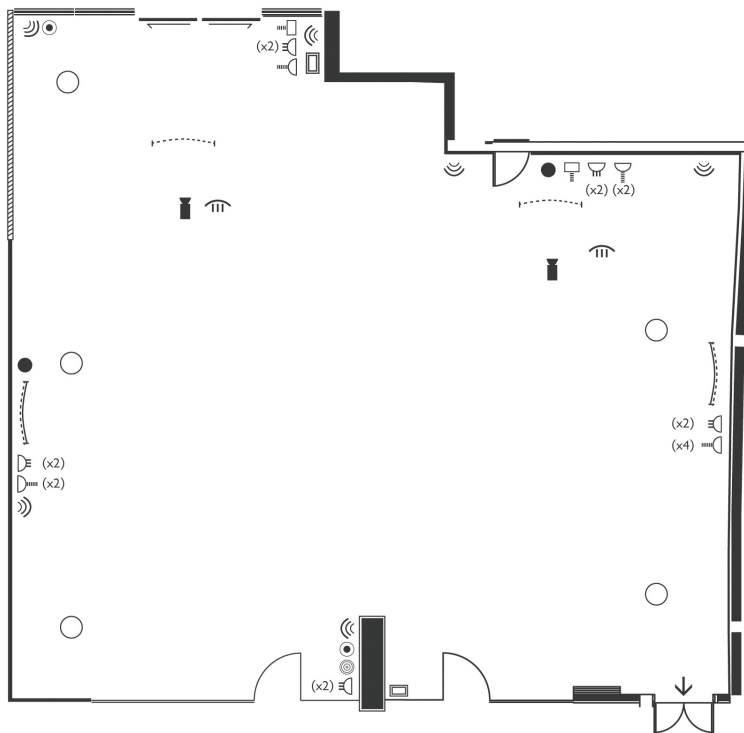
PRINTWORKS

1 & 2



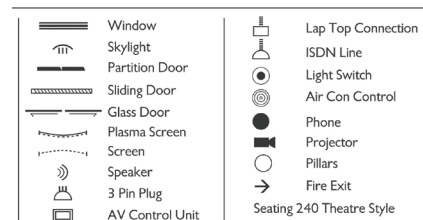
Printworks is a unique venue with its whitewashed walls and solid Junker oak wood floors and is suitable for a variety of events such as meetings, conferences, weddings and Christmas parties to name a few. Printworks is a highly versatile room and can be used to accommodate up to 350 people for receptions or 240 people theatre style. Printworks acts as a blank canvas and can be lit, branded and themed in a number of different styles to suit each meeting or event.

PRINTWORKS 1 & 2



Printworks offers the following facilities:

- Complimentary 500 mbps WiFi
- Natural daylight
- Blackout facilities
- Air conditioning
- Notepads and pens
- LCD projector and screen
- Flipchart
- Data port
- Telephone
- Inbuilt PA system
- Creston system that controls AV and blinds
- Roving Mics
- Podium and Mic
- VGA / HDMI and Thunderbolt connections



Dimensions Meters	Dimensions Feet	Theatre	Classroom	U-Shape	Boardroom	Cabaret	Banquet	Reception
Dimensions & Capacity	250sqm L: 13.7 W: 18.2 H: 2.65	240	130	80	70	112	160	350

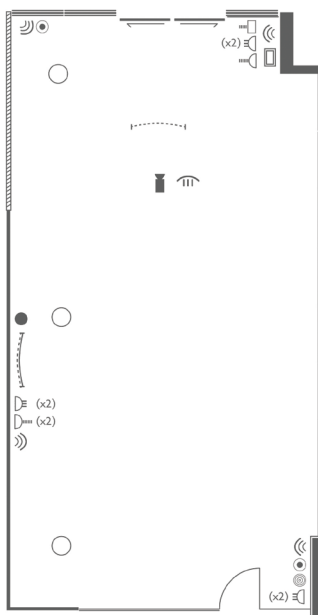
Please contact our dedicated Meeting and Events Team on tel: +353 1 887 2458 or email events@morrisonhotel.ie for availability or additional information

PRINTWORKS 1



Printworks 1 is a unique venue with its whitewashed walls and solid Junker oak wood floors and is suitable for a variety of events such as meetings, conferences, weddings and Christmas parties to name a few. Printworks 1 is a highly versatile room and can be used to accommodate up to 180 people for receptions or 120 people theatre style. Printworks 1 acts as a blank canvas and can be lit, branded and themed in a number of different styles to suit each meeting or event and it overlooks the Courtyard Garden with floor to ceiling windows.

PRINTWORKS 1



126m²

L: 13.7m

W: 9.23m

H: 2.65m

- Window
- Skylight
- Partition Door
- Sliding Door
- Glass Door
- Plasma Screen
- Screen
- Speaker
- 3 Pin Plug
- AV Control Unit
- Lap Top Connection
- ISDN Line
- Light Switch
- Air Con Control
- Phone
- Projector
- Pillars

Seating 120 Theatre Style

Printworks 1 offers the following facilities:

- Complimentary 500 mbps WiFi
- Natural daylight
- Blackout facilities
- Air conditioning
- Notepads and pens
- LCD projector and screen
- Flipchart
- Data port
- Telephone
- Inbuilt PA system
- Creston system in PW1 that controls AV and blinds
- Roving Mics
- Podium and Mic
- VGA / HDMI and Thunderbolt connections

Dimensions & Capacity	Dimensions Meters	Dimensions Feet	Theatre	Classroom	U-Shape	Boardroom	Cabaret	Banquet	Reception
		126sqm L: 13.7 W: 9.23 H: 2.65	1362sqft L: 44.95 W: 30.3 H: 8.7	120	60	40	36	56	80

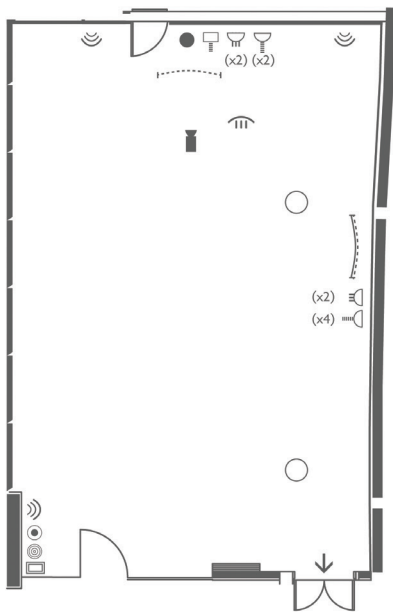
Please contact our dedicated Meeting and Events Team on tel: +353 1 887 2458 or email events@morrisonhotel.ie for availability or additional information

PRINTWORKS 2



Printworks 2 is a unique venue with its whitewashed walls and solid Junker oak wood floors and is suitable for a variety of events such as meetings, conferences, weddings and Christmas parties to name a few. Printworks 2 is a highly versatile room and can be used to accommodate up to 170 people for receptions or 100 theatre style. It acts as a blank canvas and can be lit, branded and themed in a number of different styles to suit each meeting or event

PRINTWORKS 2



124m²

L: 13.7m

W: 9.05m

H: 2.65m

- Skylight
- Partition Door
- Plasma Screen
- Screen
- Speaker
- 3 Pin Plug
- AV Control Unit
- Lap Top Connection
- ISDN Line
- Light Switch
- Air Con Control
- Phone
- Projector
- Pillars
- Fire Exit

Seating 100 Theatre Style

Printworks 2 offers the following facilities:

- Complimentary 500 mbps WiFi
- Natural daylight
- Blackout facilities
- Air conditioning
- Notepads and pens
- LCD projector and screen
- Flipchart
- Data port
- Telephone
- Inbuilt PA system
- Creston system in PW2 that controls AV and blinds
- Roving Mics
- Podium and Mic
- VGA / HDMI and Thunderbolt connections

Dimensions Meters	Dimensions Feet	Theatre	Classroom	U-Shape	Boardroom	Cabaret	Banquet	Reception
Dimensions & Capacity 124sqm L: 13.7 W: 9.05 H: 2.65	1335sqft L: 44.95 W: 29.7 H: 8.7	100	42	40	30	42	60	170

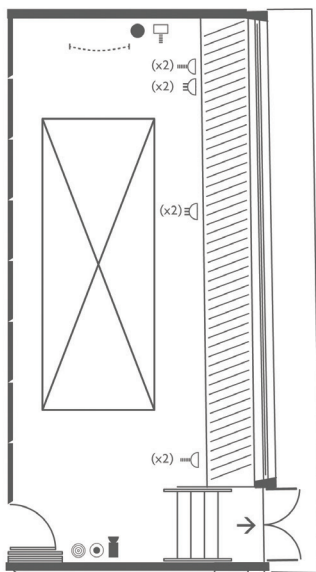
Please contact our dedicated Meeting and Events Team on tel: +353 1 887 2458 or email events@morrisonhotel.ie for availability or additional information

STRAND STREET



Strand Street Boardroom is a contemporary room that can hold up to 20 people boardroom style. It is situated on the ground floor, across the corridor from Printworks and can be opened up and combined with Printworks to offer a larger more flexible space. Strand Street is tastefully decorated and offers the delegate a comfortable room with a light and airy feel, filled with natural daylight. Strand Street offers full blackout facilities & air conditioning and a 75" Sony Bravia TV that comes with 'Clickshare' to wirelessly connect with laptops. This room is an ideal room for interviews, training, presentations and board meetings.

STRAND STREET



44 m²
L: 11.6m
W: 3.8m
H: 2.51m

- Window
- Partition Door
- Screen
- 3 Pin Plug
- Lap Top Connect
- ISDN Line
- Light Switch
- Air Con Control
- Phone
- Projector
- Fire Exit
- Seating Area
- Boardroom Table (seating 22)

Strand Street offers the following facilities:

- 75" Sony Bravia TV that comes with "Clickshare" to wirelessly connect to laptops
- Natural daylight
- Air conditioning
- Blackout blinds
- LCD projector & screen
- Flipchart
- Complimentary 500 mbps WiFi
- Multi region DVD player
- Dimmer lighting
- Complimentary mineral water on arrival
- Notepads and pens
- VGA / HDMI and Thunderbolt connections

Dimensions & Capacity	Dimensions Meters	Dimensions Feet	Theatre	Classroom	U-Shape	Boardroom	Cabaret	Banquet	Reception
		44sqm L: 11.6 W: 3.8 H: 2.5	475sqft L: 38 W: 12.5 H: 8.2	30	15	•••	20	•••	•••

Please contact our dedicated Meeting and Events Team on tel: +353 1 887 2458 or email events@morrisonhotel.ie for availability or additional information

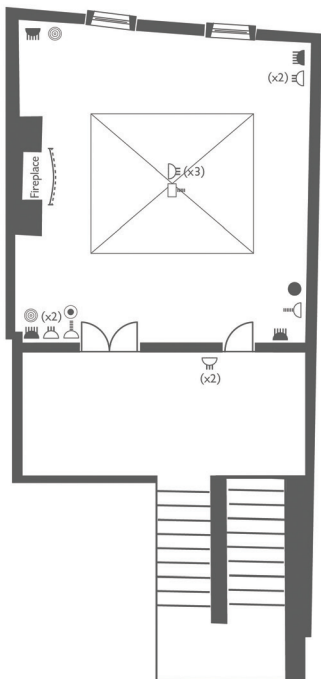


GEORGIAN BOARDROOM



The Georgian Boardroom is located on the first floor, above the Art Gallery. This means that it is the perfect venue for a private and confidential meeting. It offers floor to ceiling windows with views over the River Liffey and high Georgian ceilings. This room is chic and stylish with a contemporary chandelier, cherry red leather office chairs and a heavy mahogany table. There is a mezzanine area outside the room which is perfect for tea and coffee breaks and this overlooks the Courtyard Garden. The Georgian Boardroom can seat up to 14 delegates boardroom style.

GEORGIAN BOARDROOM



- 55m²
- L: 6.3m
- W: 8.7m
- H: 3.68m
- Window
- Plasma Screen
- 3 Pin Plug
- 5 Amp Plug
- Lap Top Connectio
- ISDN Line
- Light Switch
- Air Con Control
- Phone
- Boardroom Table (seating 14)

The Georgian Boardroom offers the following facilities:

- Natural daylight
- Air conditioning
- Black-out blinds
- LCD TV Screen
- Screen
- Flipchart
- Complimentary 500 mbps WiFi
- Multi region DVD player
- Dimmer lighting
- Complimentary mineral water on arrival
- Notepads and pens
- VGA / HDMI and Thunderbolt connections

	Dimensions Meters	Dimensions Feet	Theatre	Classroom	U-Shape	Boardroom	Cabaret	Banquet	Reception
Georgian Boardroom	58.4sqm L: 6.3 W: 8.7 H: 3.7	590sqft L: 20.7 W: 28.5 H: 12.1	•••	•••	•••	14	•••	•••	•••

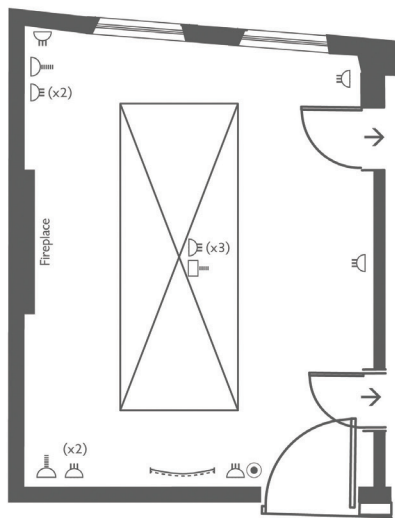
Please contact our dedicated Meeting and Events Team on tel: +353 1 887 2458 or email events@morrisonhotel.ie for availability or additional information

MORRISON BOARDROOM



The Morrison Boardroom is our most intimate meeting room and contains original features from the Georgian era. It is a south-facing room overlooking the River Liffey which is naturally illuminated and is incorporated into the Georgian wing of the hotel. The Morrison Boardroom features a dark wood boardroom table seating up to 8 delegates. The wooden floors and the Clea Van Der Grijn paintings add special touches to this corporate boardroom. This unique and stunning room is ideal for smaller meetings, board meetings or interviews.

MORRISON BOARDROOM



- 10 m²
 - L: 4.0m
 - W: 2.5m
 - H: 2.5m
-
- Window
 - Plasma Screen
 - 3 Pin Plug
 - Lap Top Connection
 - ISDN Line
 - Light Switch
 - Fire Exit
 - Boardroom Table (seating 8)

The Morrison Boardroom offers the following facilities:

- Natural daylight
- Air conditioning
- Black out facilities
- LCD enabled TV
- Screen
- Flipchart
- Complimentary 500 mbps WiFi
- Multi region DVD Player
- Dimmer lighting
- Complimentary mineral water on arrival
- Notepads and pens
- VGA / HDMI and Thunderbolt connections

Dimensions & Capacity	Dimensions Meters	Dimensions Feet	Theatre	Classroom	U-Shape	Boardroom	Cabaret	Banquet	Reception
		10sqm L: 4 W: 2.5 H: 3	107sqft L: 13.1 W: 8.2 H: 9.8	8

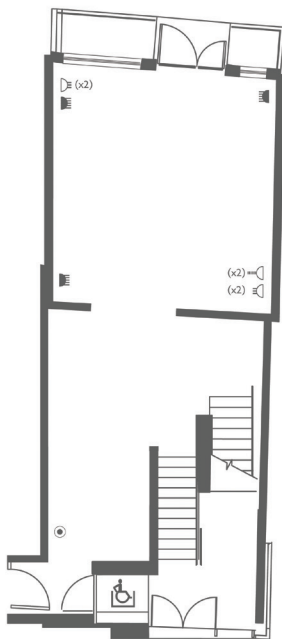
Please contact our dedicated Meeting and Events Team on tel: +353 1 887 2458 or email events@morrisonhotel.ie for availability or additional information

ART GALLERY



The Art Gallery is located at the front of the Georgian Buildings with its own private entrance from Ormond Quay, or one can enter internally via the hotel. Floor to ceiling windows offers guests spectacular views of the River Liffey and the room is flooded with natural daylight. The Art Gallery elegantly features stunning antiques and artwork and includes a magnificent free standing mirror and a contemporary crystal chandelier. This unique venue space opens on to a beautifully designed Courtyard Garden. The stylish, sophisticated décor and versatile space makes this venue ideal for product launches, cocktail parties or receptions

ART GALLERY



51 m²
 L: 15.6m
 W: 4.2m
 H: 3.11m

- Window
- 3 Pin Plug
- 5 Amp Plug
- ISDN Line
- Light Switch
- Wheel Chair Lift

The Art Gallery offers the following facilities:

- Complimentary 500 mbps WiFi
- Natural daylight
- Air conditioning
- Inbuilt PA system
- Podium and podium microphone
- 2 roving mics

Room	Dimensions Meters	Dimensions Feet	Theatre	Classroom	U-Shape	Boardroom	Cabaret	Banquet	Reception
Art Gallery	65.5sqm L: 15.6 W: 4.2 H: 3.1	707sqft L: 51.2 W: 13.8 H: 10.2	80

Please contact our dedicated Meeting and Events Manager on tel: +353 1 887 2458 or email events@morrisonhotel.ie for availability for additional information.



COURTYARD GARDEN



The Morrison hotel boasts a unique and fabulously contemporary designed, internal courtyard garden that is truly an oasis in the heart of Dublin City. This recently redesigned heated area is wonderfully spacious and can be used for a variety of corporate and social events. Guests can relax and unwind in this peaceful and tranquil area that offers a haven from the hustle and bustle of the City.

The courtyard space also benefits from a fully retractable canopy covering and infra red electric heaters that heat by zone.

When booking an event in Printworks like a Wedding / Ball or BBQ for example your guests would then get automatic exclusive use of the Court Yard Garden. With its retractable canopies and infra-red electric heaters this space can cater for all weather.



Theatre Classroom U-Shape Boardroom Cabaret Banquet Reception

Courtyard Garden

... .. 80

Please contact our dedicated Meeting and Events Manager on tel: +353 1 887 2458 or email events@morrisonhotel.ie for availability for additional information.

The Morrison a DoubleTree by Hilton, Ormond Quay, D1 t: + 353 1 887 2458 e: events@morrisonhotel.ie www.morrisonhotel.ie

[@MORRISONDUBLIN](https://twitter.com/MORRISONDUBLIN)

[f/MORRISONHOTELDUBLIN](https://www.facebook.com/MORRISONHOTELDUBLIN)



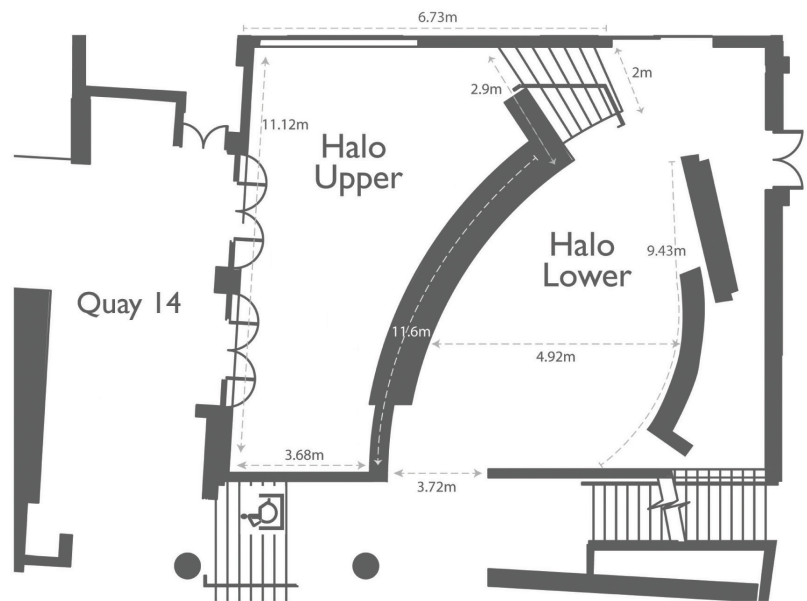
HALO



The freshly restyled Halo room, complete with its eye-catching Birdman sculpture, is ideal as a private and very unique event space for lunches or dinners for up to 80 people or stand up cocktail / drinks events up to 120 people.

Halo features high ceilings that rise to the second floor, an imposing painting by Clea Van Der Grijn and oversized mirrors and lamps alongside a mix of both modern & antique tables. This space is the perfect marriage of the old & the new while still leaving you with a contemporary blank canvas to make it your own. Cream walls & light wooden floors mean this space can easily be transformed to a space for private dinners, special occasions or corporate events.

With its neutral colours, Halo can also be themed or branded for a product launch. Halo has its own ready-made larger than life cinema screen complete with HD projector ideal for presentations, company branding or even live sporting events directly to attendees.



Theatre Classroom U-Shape Boardroom Cabaret Banquet Reception

Dimensions & Capacity

... .. 80 120

Please contact our dedicated Meeting and Events Team on tel: +353 1 887 2458 or email events@morrisonhotel.ie for availability or additional information

The Morrison a DoubleTree by Hilton, Ormond Quay, D1 t: + 353 1 887 2458 e: events@morrisonhotel.ie www.morrisonhotel.ie

[@MORRISONDUBLIN](https://twitter.com/MORRISONDUBLIN)

[f/MORRISONHOTELDUBLIN](https://www.facebook.com/MORRISONHOTELDUBLIN)

